



Newsletter 110, July 2011

Australian & New Zealand Map Society

ISSN 1837-3372



National Library of Australia 'mapped' during 'Enlighten', Canberra, 11 March
(image provided by Marianne Pietersen)

In this issue:

Southern Latitudes: 39th Annual Conference Report/News from the National Library of Australia/News from the State Library of New South Wales/Vice-Regal Event and Symposium to mark the 200th anniversary of the publication of the first map of Australia/James Hector and the Geological Mapping of Otago/ News from the National Library of New Zealand/New members/Coming events, recent publications and other items of interest....

Newsletter of the Australian & New Zealand Map Society (ANZMapS), published by
The Australian & New Zealand Map Society, Incorporated (Melbourne, Victoria). Issue # 110, July 2010

Southern Latitudes Conference Report

Southern Latitudes, the 39th annual conference of the Australian and New Zealand Map Society Conference was held at the State Library of New South Wales in Sydney, Tuesday 24 May - Friday 27 May. It had been nearly twenty years since the last conference was convened at the State Library, and the Mitchell Library setting added much to the experience.

The conference commenced on Tuesday night with the Welcome Drinks sponsored by the Mitchell Librarian, Paul Brunton. On display for the evening was the Tasman map presented to the Library in 1931. The conference crowd then stayed on for the launch of the latest book by Professor Robert Clancy, written with Paul Harcombe, *The Maps that shaped Australia*. Sponsored by the Land and Property Management Authority the launch featured a very enthusiastic audience and some excellent food.

The conference was opened officially on Wednesday morning by Rob Thomas, map enthusiast and President of the Library Council and State Library Foundation, followed by a Welcome from Dr. Martin Woods, President of ANZMapS.

Over the next two days 20 papers were presented on a variety of topics including the continuing mystery of Java la



Grande, the charting and naming of Australia and the mapping of Antarctica. A particular highlight was a fascinating presentation by Frederik Muller on a newly discovered map of the Pacific. Fries' *Tabula moderna alterius hemispherii*, 1525, is a manuscript map of the Western hemisphere which, according to Muller, is a missing map in all Ptolomeic atlases (map 51). The presentation summarised the steps taken to determine the dating and authorship of this rare map. The rare map was on display at the Library over the first two days of the conference.

Frederik Muller. *Tabula moderna alterius hemispherii*, 1525

A feature of the conference program was a changing display of maps from the Library's collection based on the theme of each session. For example, the beautiful facsimile of the Vallard Atlas published in 2008 was on display during the first session when Allen Mawer and Andrew Ellison discussed the various theories on the existence of a southern continent. Another excellent presentation on the first day was given by John Robson on the career of marine surveyor, John Lort Stokes who sailed with Darwin on the voyage of the *Beagle*.

On Thursday, in the final session of the conference, Larry Robbins gave an entertaining account of the resurveying of Dusky Sound including Pickersgill Harbour, between 1994 and 1998. The survey updated charts prepared by James Cook over 200 years previously.



Larry Robbins. Resurveying Dusky Sound.



Dinner at Cellos, Castlereagh Hotel

The conference dinner was held on Thursday evening at Cellos in the Castlereagh Hotel. It was a very Edwardian setting for a formal dinner with Paul Brunton giving an entertaining account on the provenance of a few of the Library's greatest treasures. A highlight of the evening was the proactive approach of the Society's President when the catering staff decided to clean the cutlery in the middle of Paul's presentation. Picking up the cutlery drawer from the surprised waitress, Martin walked into the kitchen and deposited the tray out of earshot.

On the final morning of the conference attendees were provided with a behind the scenes tour of the National Maritime Museum and the State Library of New South Wales. The staff at the State Library enjoyed the chance to talk to the tour groups, displaying some of the preservation and digitisation work they are undertaking on maps and atlases from the collections. In fact, the conference gave a number of staff at the Library the chance to listen to sessions, meet members of ANZMapS and learn something about the history of maps and mapping in Australia, New Zealand and Antarctica.

After lunch on Friday a workshop was held for Map collection managers and curators. Monika McIntyre and Martin Woods provided updates on recent digitisation projects and online delivery of maps at the State Library of Victoria and the National Library of Australia. Andrew Wilson from the Arts e-Research Unit at the University of Sydney provided a demonstration of online delivery tools for map collections and images.



Digitisation area, SLNSW

The conference closed on Friday afternoon.

Maggie Patton

State Library of New South Wales

News from the National Library of Australia

Collection Milestones

The Australian Aerial Photograph Project is nearing completion. This large processing and control project has accounted for over 712,000 photographic prints, with the last few boxes catalogued in June 2011. Pre-satellite aerial photography of the Australian landscape is increasingly sought after by land and water management specialists, government departments, family historians, and other researchers, and as more people and agencies have been made aware of them, copies of photographs are frequently ordered and the imagery added to reports, geospatial systems, etc. The project to control the collection has been in the works since the deposit from National Mapping in the 1980s, however did not commence in earnest until 2006 after a pilot to control Papua New Guinea aerial photographs had been successfully completed. The work is beyond the Library's capacity, and was only made possible by volunteer input. Data entry for each box of photos, according to 1:250,000 sheet name and with the addition of other place information where possible, was added to spread sheet, then reviewed and downloaded onto the Library's cataloguing system. Once the final photographs are described, the last group of catalogue records will be added to the catalogue, in late 2011. Already many can be located by entering the sheet name and 'aerial' in the NLA catalogue, or using Trove, or Google (the latter by entering National Library in addition to the search terms). Access is enhanced by a link to a digitised online flight diagram, where these are available.

Control of the Australian Antarctic Division aerial photo collection is now well advanced, and this run of approximately 63,000 photographs from the 1950s-1970s is nearing completion (also with volunteer involvement). The photographs will complement the holdings of the AAD, and provide an additional access point to this important resource.

Notable acquisitions

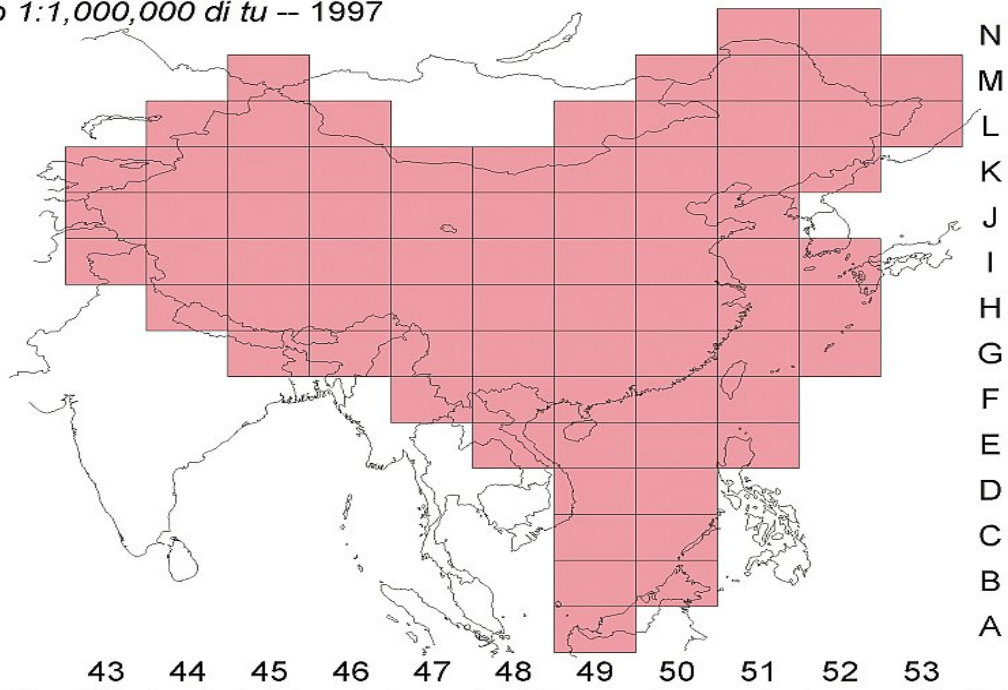
Among antique mapping acquired, the National Library has purchased two rare miniature globes recently, one by English instrument maker Charles Silberrad, dated 1809, the other by Cary, 1791. *Cary's pocket globe agreeable to the latest discoveries*, is the first such globe to include traces of 'First Fleet' voyages, 1788. The Library has also acquired the 1657 edition of Jansson's *Atlantis majoris quinta pars*, the fifth part of the six volume *Novus atlas*, with additional maps for the East Indies.



Jansson's anemographic chart from *Atlantis majoris quinta pars*

Efforts to enhance the Library's holdings of Asia-Pacific mapping continue unabated, and among recent acquisition is the national topographic map series of China produced 1970s – 1990s. The series produced by the State Bureau of Surveying and Cartography comprises 77 maps at 1:1 000 000 scale, with coverage of the People's Republic of China, Taiwan, Hong Kong, Macao, South China Sea, and parts of surrounding countries including Brunei and Bhutan. The Library also acquired a complete set of the most recently published India 1:250 000 topographic sheets, updating the British era holdings (1890s-1940s), and a comprehensive set of the Indonesia 1:250 000 geology series, comprising maps and reference notes (and 1:100 000 for Java). Over the past few years the Library has been offered significant WWII mapping, and recently received consignments of World War II maps for the South West Pacific theatre. The maps are a mix of US and Japanese, both operational and illustrative/propagandist, and will be catalogued soon.

CHINA -- 1:1,000,000
Zhongguo 1:1,000,000 di tu -- 1997



NLA holds all 77 sheets in this set, shown in pink

sheet numbering example: Beijing = J50

Call number: MAP G7820 s1000

Martin Woods

Curator of Maps, National Library of Australia

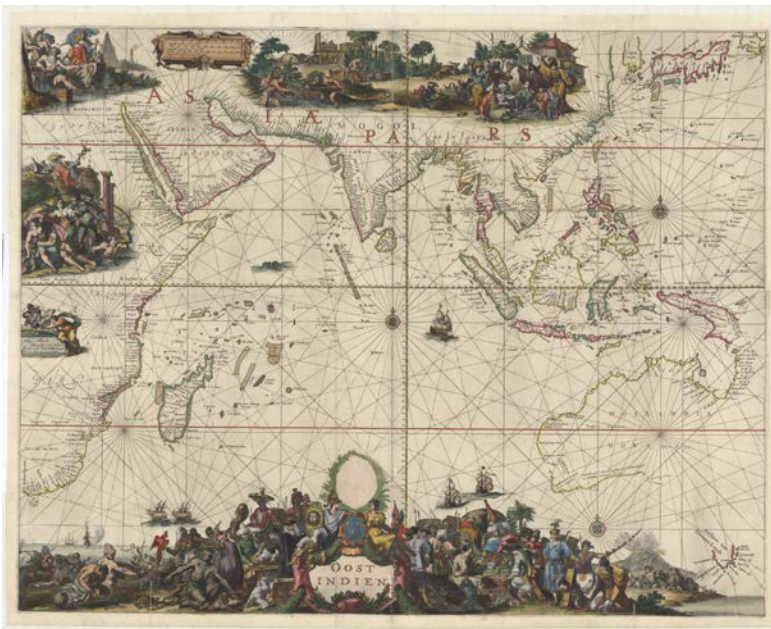
News from the State Library of New South Wales

The Dixson Map Digitisation project has been completed. This project enabled the digitisation of over 1,000 maps donated by Sir William Dixson in 1952. The collection reflects Dixson's interest in early navigation, geography and the European exploration and settlement of the Pacific, in particular Australia. The collection includes examples from the 16th through to the 20th century including hand coloured maps by Dutch mapmakers, Ortelius, Blaeu, de Wit, and Jansson. Many of the maps are rare manuscript copies by inland explorers including Sir Thomas Mitchell, Ludwig Leichhardt and Augustus Gregory.

An [online showcase](#) has been developed on the Library's website which features a selection of maps digitised through the project.

The Maps Section has developed a [new research guide](#) to promote the map collections and assist clients to locate material. The new research guide provides information on the collection, new acquisitions and projects. It also incorporates web 2.0 features including RSS and Twitter feeds.

Included in the guide is a new keyword search which limits your search to maps listed in the catalogue.



Oost Indien by Hugo Allard and Romeyn de Hooghe, ca. 1668.

New acquisition

The Library has recently purchased a *Oost Indien* by Hugo Allard and Romeyn de Hooghe, ca. 1668. This is a large portolan chart of the Indian Ocean and the East Indies including Australia and Van Diemens Land. The chart is lavishly decorated and signed by Romeyn de Hooghe (1645 - 1708), an important Dutch Baroque artist and engraver. The chart is unique. The only other version is an uncoloured and incomplete example held in the University Library Collection in Leiden

Future exhibition

In December 2011 a major exhibition, *Finding Antarctica*, opens at the Library. The exhibition will document the gradual discovery and mapping of Antarctica from the 15th to the 21st century, featuring maps and charts from the Library's collection. The exhibition will be open from December to February 19, 2012.

Staffing update

Maggie Patton is currently acting as the Manager, Original Materials at the State Library. From July 25 Andy Carr will be acting Head of the Maps Section. Elise Edmonds continues in her role as Maps Librarian.

Maggie Patton

Vice-Regal Event and Symposium to Mark the 200th Anniversary of the Publication of the First Full Map of Australia

This year marks the 200th anniversary of the publication, in Paris, of what is known as the Freycinet Map, the first map of Australia to be published showing the full outline of Australia. Consequently, the Australia on the Map Division of the Australasian Hydrographic Society has been actively promoting commemorations of this historic event across Australia.



Governor-General of Australia, Her Excellency Ms Quentin Bryce, with Henry de Freycinet

One of the recent highlights was the presentation, on 16 June, by Henry de Freycinet of a signed copy of the Freycinet Map to the Governor-General of Australia, Her Excellency Ms Quentin Bryce. Henry de Freycinet is the last male descendant of the de Freycinets and was brought out from France to participate in the ceremony, as well as speak at a special commemorative symposium. Apart from Henry de Freycinet, others in attendance were Vice Admiral Chris Ritchie, Patron of the Australasian Hydrographic Society, the French Ambassador M. Michel Filhol, the Director-General of the National Library of Australia, Ms Anne Marie Schwirtlich, Rupert Gerritsen, Chair of the Australia on the Map Division, and Peter Reynders, Secretary of the Australia on the Map Division. Peter and Rupert are both also members of ANZMapS.



Viewing of French charts and atlases, Maps Reading Room National Library

As mentioned, a special commemorative symposium was also held, on 19 June in Canberra, timed to mark World Hydrography Day. This symposium, "The Freycinet Map of 1811 – 200th Anniversary of the Publication of the First Map of Australia," was conducted in collaboration with the National Library of Australia and the French Embassy. It not only featured Henry de Freycinet, who detailed the history of this famous French family but other eminent speakers, including Emeritus Professor Margaret Sankey and Professor Jean Fornasiero. Peter Reynders and Rupert Gerritsen also announced the recent discovery of the first world map showing a full outline of Australia. The Maps staff at the Library mounted a display of early French charts and atlases which was attended by the 150 or so symposium attendees. The symposium was a great success and received some national media coverage. Governor-General of Australia, Her Excellency Ms Quentin Bryce, with Henry de Freycinet

Rupert Gerritsen, Chair, Australia on the Map Division

James Hector and the Geological Mapping of Otago

To coincide with "[Hector Day](#)" 16 March, (Hectors birthday) the Hocken Library, University of Otago, launched a new online version of a map documenting the geological survey of Otago and Southland carried out by James Hector in the early 1860s. Hector is one of New Zealand's most respected scientists, and after he completed the Otago and Southland survey he went on to head the New Zealand Geological Survey and the Colonial Museum in Wellington.

The original map hung in the Geology Department Museum for many years and by the late 1970's there was concern about deterioration of the map, leading to discussions with the Hocken Library about its repair and conservation. It was sent away for restoration with a grant from the Art Galleries and Museums Association of New Zealand, but little documentation has survived. For over 25 years the map was overlooked. Finally, in 2007 it was located in the Auckland Art Gallery, and returned to the Hocken Library.

The University of the Third Age Charitable Trust has generously funded this project to conserve the original map and make the map available to a much wider audience. The original map is now housed safely at the Hocken Library.



Hocken staff viewing the Hector map

The original map is incredibly detailed. To create the digital version the map was scanned at the New Zealand Micrographics Heritage Materials Imaging Facility Wellington. Apart from making the map widely available through the website, digitisation enables researchers to examine specific areas of the map in detail without resorting to magnifying glasses.



James Hector c.1879. MS-0445-4/07

The website content was authored by researcher Simon Nathan and designed by the University Library Web Developer, Merrin Brewster. Cleaning, flattening and conservation were carried out by local Conservator, Marion Mertens.

<http://library.otago.ac.nz/hocken/hector/index.html>

<http://thehockenblog.blogspot.com/2011/03/james-hector-and-geological-mapping-of.html>

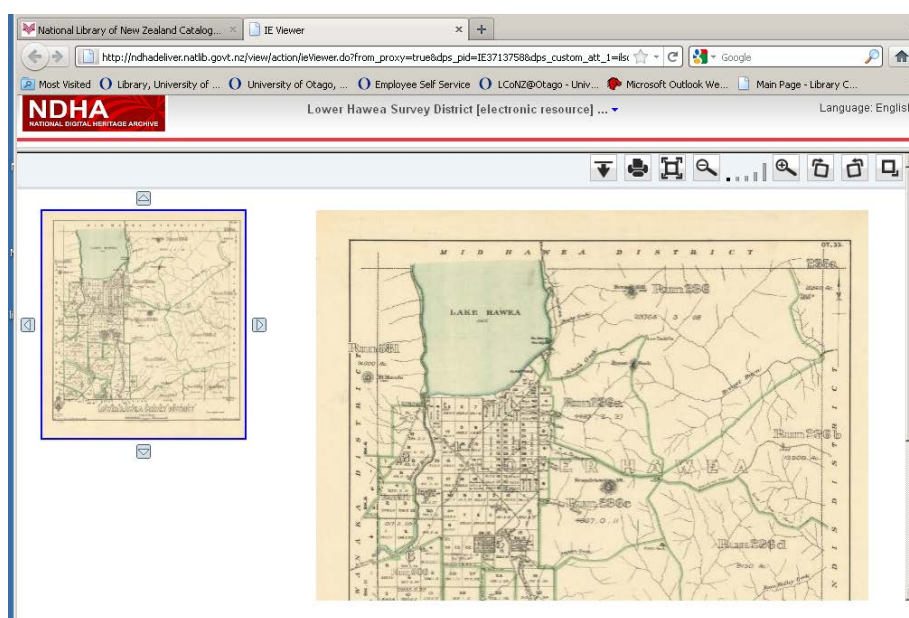
News from the National Library of New Zealand

The new National Librarian is William Macnaught. He started 2 May 2011.

The National Library of New Zealand has been digitising maps including the NZMS cadastral Survey District maps that make up the NZMS 13 series from the first half of the 20th century. The Cartographic Collection forms part of the [Alexander Turnbull Library](#) collections. Zoom functionality enables maps to be seen at full original size.

Search for published maps using the National Library Catalogue (to find images only type in 'MapColl digital' and select 'Call number begins with', or use the link below to bring up all the digital copies together.

[See all digital copies of maps on the National Library catalogue](#)



Lower Hawea Survey District [cartographic material] / drawn by S.A. Park, Jan. 1923.

http://nlnzcat.natlib.govt.nz/cgi-bin/Pwebrecon.cgi?v1=614&ti=601,614&Search%5FArg=mapcoll%20digital&Search%5FCode=CALL&CNT=25&REC=0&RC=0&PID=Zv1aAsHdn_2GEI5wcWlrG1PujYyiHu&SEQ=20110715132922&SID=1

New Members

A warm welcome to our newest ANZMapS members:

Louis Kissajukian, NSW; Michael Pearson, ACT; Michael Brown, NSW; Michael Cleary, NSW; Katharine Hunter, USA; Robert Thomas, NSW; Ruth Gardiner, QLD; Helen Attar, SA; Phillip Clarkson, NSW; David Wright, WA; Ian Burnet, NSW and Colin Hargreaves, QLD.

Coming events, recent publications and other items of interest

New online mapping of ANZAC diggers

A new online map launched by the National Archives in Canberra shows the home towns of World War I diggers, and allows people to view individual service records, build tributes, or attach memories to an online scrapbook.

The web map, entitled Mapping Our Anzacs, allows researchers or community members to start at an area and find all the diggers from that area. Previous to this, researchers had to start with a name, rather than a place. Now, any interested community member can quickly find all the diggers that were born or enlisted in their town.

Users can also create an online tribute to a group of service personnel. You select the person or people by family name, or select a group of people by their association with a town. Once grouped together, a unique URL is created for the tribute page, which you can share with friends, town members and others.

The online scrapbook functionality allows photos, videos or other memorabilia to be upload to the site. The collection of scrapbook entries is available at <http://our-anzacs.tumblr.com/>

The mapping service is available at <http://mappingouranzacs.naa.gov.au/>

Map Curators' Group Workshop 2011, York, England 7-8 September

The Map Curators' Group of the British Cartographic Society holding its workshop Wednesday and Thursday 7-8 September 2011 at the Park Inn in York, England.

Harvard Exhibition

For those unable to visit Cambridge this summer for Harvard Map Collection's new exhibit "Going for Baroque: The Iconography of the Ornamental Map," highlights of the exhibit are now available online at <http://hcl.harvard.edu/libraries/maps/exhibits/baroque/>

The site allows online visitors access to the exhibit text, catalogue records, and high-resolution images.

For those who can visit us in person, the exhibit is installed in Pusey Library's Map Gallery until September 30, 2011.

Early Navigators of Bass Strait 1770-1803

This large map was published in late 2010 by the Office of Surveyor-General, Victoria, Department of Sustainability and Environment, at a scale of 1:500 000. It covers the southern parts of Victoria and South Australia and northern Tasmania, and shows Aboriginal Language Areas and place names, as well as the routes of twenty explorers. The Surveyors-General of Victoria and Tasmania, John Tulloch and Peter Murphy respectively, are acknowledged in its production, Rolando Garay of DSE Victoria was responsible for the cartography, and the contents are very largely the result of meticulous research by ANZMapS member Greg Eccleston. Notes by Greg accompanying the map are available on the ANZMapS website under Publications.

The map is available for sale from Information Victoria, Melbourne and Mapworks, Essendon North VIC 3041
Price for the map and posting tube is \$45:00 from both locations.

Judith Scurfield

Map Librarian, State Library of Victoria, Melbourne

Hundreds of geospatial e-books now available for free

The National Academies Press – the US publisher for the National Academy of Sciences, National Academy of Engineering, Institute of Medicine, and National Research Council – is offering all of its books free in PDF format.

You can access and search for the books at <http://www.nap.edu/>

2011 IMTA Global Conference & Trade Show, November 10th-11th,
The Imperial Queen's Park Hotel, Bangkok, THAILAND

Mapping the good earth

A free online resource has been developed to provide a three-dimensional digital map of the world's soils. CSIRO is leading the regional node of this project to produce the first detailed, three-dimensional digital map of the world's soils. Claire Harris reports in ECOS Magazine.

http://www.sciencealert.com.au/features/20111407-22396.html?utm_source=feedburner&utm_medium=email&utm_campaign=Feed%3A+sciencealert-latestfeatures+%28ScienceAlert-Latest+Features%29

The History of Cartography' available online

The first two volumes of the defining work, *The History of Cartography*, are now freely available online. That means four physical volumes, with the hope that the two-part Volume 3 may follow in the future. The University of Chicago Press has broken the text down into the separate chapters, presented as a series of 104 pdfs.

<http://press.uchicago.edu/books/HOC/index.html>

Not only can you search and download individual chapters, you can also search across the four volumes. This is a major initiative, for which the publishers must be thanked and congratulated.

From Tony Campbell via the MAPHIST list-serve

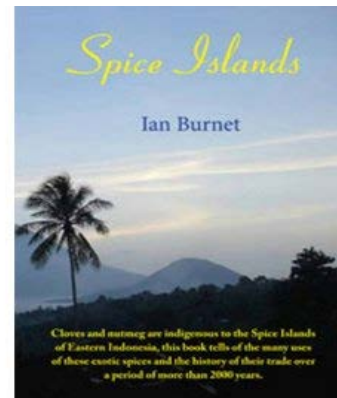
Resources and Ideas for Making Maps

<http://makingmaps.net/>

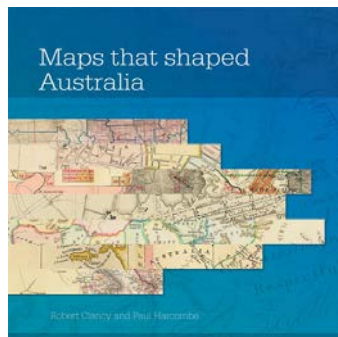
New books

Spice Islands by Ian Burnet. Kenthurst, N.S.W. Rosenberg Publishing, 2011.

The history, romance and adventure of the spice trade over 2000 years.



Maps that shaped Australia. Robert Clancy & Paul Harcombe. Bathurst, N.S.W. Land and Property Information, [2011]. ISBN: 9780980621174



"Maps that Shaped Australia is an important contribution to the understanding of the way the nation developed. Maps were vital to the expansion of the colony in the early 1800's to mid this century – although most of the maps are from the 1800's. Some of the maps in the book have rarely, if ever, been available in the public domain." (excerpt from LPI online shop webpage)

There is an online exhibition which supplements the book of the same name.

<http://www.baseline.nsw.gov.au/exhibitions.html>

British Map Engravers : A Dictionary of Engravers, Lithographers and Their Principal Employers to 1850. By Laurence Worms & Ashley Baynton-Williams

The Australian and New Zealand Map Society *Newsletter*. ISSN 1837-3372.

An occasional series of newsletters produced to keep members of the Australian and New Zealand Map Society informed about matters of immediate interest and to supplement *The Globe*, journal of the ANZMapS. Edited by Karen Craw.

Material for the *Newsletter* can be forwarded to: Karen Craw, Hocken Collections, University of Otago, P. O. Box 56, Dunedin 9054, NEW ZEALAND. (Email: karen.craw@otago.ac.nz)

Please send reviews, articles and other items of general interest for inclusion in *The Globe* to: Dr. Brendan Whyte, Map Section, National Library of Australia, Parkes Place, Parkes, ACT 2600, AUSTRALIA. (Email: obiwonfive@hotmail.com)

GST: The Australian and New Zealand Map Society's ABN is **19 046 516 617**. As a not-for-profit incorporated association (registered in Victoria - no. A0034021A) with an annual turnover of less than \$100 000, ANZMaps is not registered for and does not charge GST. Consequently, ANZMapS does not issue 'tax invoices', as these may only be issued by organizations that are registered for GST.