



ANZMapS **MEMBERSHIP 2012**

JOIN OR RENEW NOW!

Newsletter 111, December 2011

Australian & New Zealand Map Society
ISBN 1837-3372

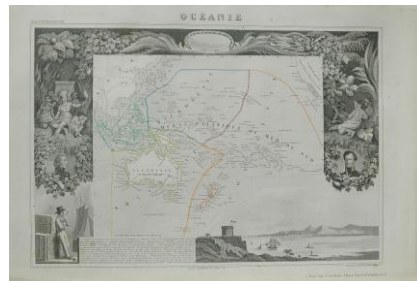
Promoting map collections, geospatial
education and communication throughout
Australia & New Zealand.

ANZMapS is conducting a membership drive in 2012, with extra inducement of a rare map for the first three members who sign up a 'newbie'. Simply have your prospective member complete the membership form on the last page of the Newsletter, ensuring they indicate you as the 'spotter' and we will arrange to ship your choice of these maps donated by *Cabinet of Discoveries*, Canberra.

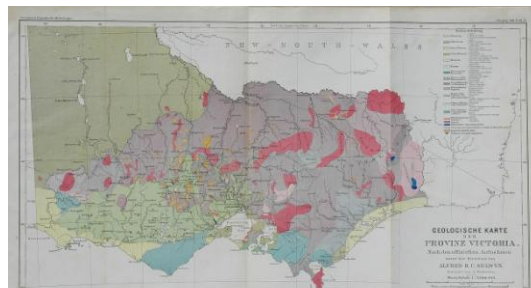
Johnson's Australia - Antique map of the Australia continent with decorative border and key to the counties. State boundaries as prior to 1859 (i.e. with "North Australia" including today's Queensland except for the upper Darling and Brisbane regions which are part of NSW). By Johnson and Ward, New York, plate number 88, 1862. 335 x 385 mm; Original hand colour; condition very good, light browning of outer margins and 3



almost unnoticeable pin-prick sized fox marks



Oceanie - Antique engraved map covering Australasia, South East Asia and most of the Pacific surrounded by elaborate decorative border. By V. Levasseur From Atlas National Illustre c 1860 original hand colour outlines, condition good Numerous brown spots, mainly visible from back and do not spoil overall appearance



Geologische Karte der Provinz Victoria - [Geological map of the province of Victoria] by A. Petermann after Alfred R C Selwyn, from Dr A Petermann's Mittheilungen Justus Perthes, Goth (Germany) 1865, 270 x 460mm. Condition Very good. Minor browning of outer edges.

CABINET OF DISCOVERIES

Old Prints and Maps

A large and varied offering from the 1490s to the 1940s



See page 14 for membership form and a chance to win one of these lovely maps from *Cabinet of Discoveries*

info@oldmapsandprints.com 02 6247 6337 Campbell ACT (by appointment only)



IMTA[®]
INTERNATIONAL
MAP TRADE
ASSOCIATION
www.imtamaps.org



2012 Brisbane International Geospatial Forum

8th - 10th July 2012, State Library Of Queensland, Brisbane, Australia.

"Global Connections through Mapping"

You will find in this issue a Call for Papers for the Brisbane International Geospatial Forum, 'Global Connections through Mapping'. The conference is a joint effort of ANZMapS, the Mapping Sciences Institute, Australia, and the International Map Trade Association. Brochure and further details on the IMTA website: <http://www.imtamaps.org/>

In this issue:

2012 Brisbane International Geospatial forum: Call for papers/News from the Auckland War Memorial Museum /News from the State Library of New South Wales/ Sir William Dixon online collection /175th Anniversary of Major Mitchell's 1836 'Australia Felix' Exploring Expedition/ National Library of Australia digitisation report/RMIT Students' Dinner and 2010 Patricia Alonso Prize Winner, Jason Sankovic/ News from the National Library of New Zealand/Coming events, recent publications and other items of interest....



2012 Brisbane International Geospatial Forum

8th - 10th July 2012, State Library Of Queensland, Brisbane, Australia.

"Global Connections through Mapping"

CALL FOR PAPERS

APPLICATIONS CLOSE – 1 MARCH 2012

We now invite submissions for papers in the 2012 Brisbane International Geospatial Forum.

PRESENTATIONS & THEME

Technology has always formed a major part of Mapping and Geospatial solutions. In its time, 400 years ago, the story of Longitude and the H4 marine chronometer revolutionised navigation, as GPS has today. The organising committee would like to recognise technology and innovation, and is seeking papers and presentations current and historical, that will address this broad theme. Topics may address any aspect of innovation, from spatial data standards and locations based services, modelling, imagery, marketing, atlases, systems, education and training, to cartographic heritage and history of mapping.

Presentations should be relevant to the Geospatial and Mapping theme of the forum and are typically 25 minutes in length with 5 minutes for question time. Further information on the Forum is available at www.imtamaps.org

BENEFITS OF PRESENTING

By presenting you will:

- Have a great opportunity to showcase your projects and knowledge.
- Gain peer recognition from industry professionals.
- Be exposed to prospective clients, partners & academics.

PRESENTATION GUIDELINES

The submission must contain; Author name, presentation title (10 words or less), company name, complete address, phone, and fax information, brief presenter biography (25 words or less), abstract (150 words or less).

This year's committee will evaluate all abstracts and make selections based on topic, content, and time available. All authors will be notified after the selection process. All presenters must be registered for the conference.

Applications close 1st March 2012. Early submissions are welcomed.

SUBMISSION

Please send presentation submissions to:

Brian Spier
Director - IMTA Asia Pacific & Chair - Workshop Committee
Email: bspier@sibiz.com.au

For more info go to www.imtamaps.org or contact Brian Spier Ph +61 (0) 408 715 782

Kei konei koe: ō Tapuwae ki Tāmaki Makaurau You Are Here



<http://www.aucklandmuseum.com/1632/you-are-here:-mapping-auckland>

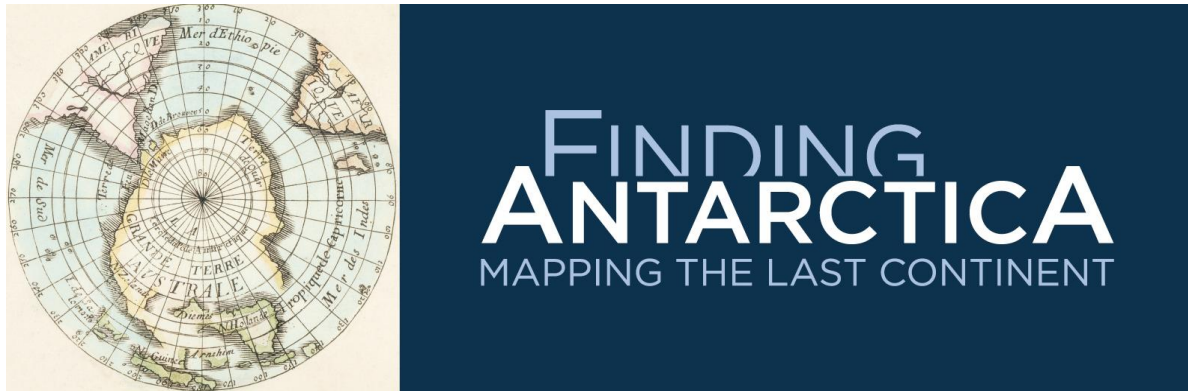
Auckland War Memorial Museum Tamaki Paenga Hira is pleased to announce the exhibition Kei konei koe: ō Tapuwae ki Tāmaki Makaurau You Are Here. This shows Auckland as a city that has been planned, designed and drawn many times over. See maps from the rich collection in Auckland Museum's library and plot your own story of the city on the interactive map.

What did Auckland look like on paper 70 or even 170 years ago? How did early Aucklanders depict the space around them? And what stories do these maps have to tell? This exhibition will give you a new perspective on your city.

The exhibition is a collaborative project by Auckland Museum, The University of Auckland and Unitec. Please click on the link below to see a short opening video presentation (3:18 mins), some photos and stories from the exhibition: <http://www.aucklandmuseum.com/1632/you-are-here:-mapping-auckland> An exhibition catalogue will be available late December.

Julie Senior

Auckland War Memorial Museum/Tamaki Paenga Hira
jsenior@aucklandmuseum.com



***Finding Antarctica* exhibition**

A landmark exhibition on the history of Antarctic mapping opens at the State Library of New South Wales on 3 December 2011. *Finding Antarctica* focuses on the cartographic representation of Antarctica, and how it has developed over 500 years. The exhibition showcases the magnificent collection of rare maps and charts held by the State Library, accompanied by rare published accounts and original sketches from Antarctic exploration by Cook, Dumont d'Urville, the United States Exploring Expedition and the Australasian Antarctic Expedition (AAE).

The exhibition is timed to coincide with the centenary of the AAE's departure from Hobart on 2 December 1911. An exhibition website is available which features an online gallery of maps, an oral history of Morton Moyes, a member of the AAE and a curators blog.

http://www.sl.nsw.gov.au/events/exhibitions/2011/finding_antarctica/index.html

Finding Antarctica has provided us with an opportunity to digitise many of our maps relating to the last continent. Digitised images are linked to individual catalogue records, such as Pierre Duval's *Terres Antarctiques* (1670), which is being used in our publicity for the exhibition (<http://library.sl.nsw.gov.au/record=b1717444>). In addition, we will soon launch an online gallery that focuses on highlights from the exhibition.

Cataloguing parish maps

The eRecords Project (<http://www.sl.nsw.gov.au/about/projects/erecords/index.html>) is creating online catalogue records for the many State Library of New South Wales collections that do not already have online records. Since the project began in 2008, the eRecords team has created almost 30,000 maps records, all available through the State Library catalogue and Trove. Attention is presently turned to the large collection of New South Wales parish maps. There are over 15,000 parish maps, each of which will receive its own electronic record. As well as searching under the names of individual parishes, you can search the catalogue under the phrase 'Parish maps of New South Wales' to find records for the parish maps catalogued so far. In early 2012, work will commence on creating eRecords for the State Library's extensive collections of NSW county maps and town maps.

Andy Carr Acting Head of Section, Maps, State Library of New South Wales

Sir William Dixson collection now on-line

Over the past 18 months the State Library of NSW has been digitising a collection of maps donated to the Library by Sir William Dixson in 1952. With the completion of the project an [online collection](#) is now available on the State Library website.

The [online collection](#) showcases 80 maps from this wonderful collection which reflects Dixson's interest in early navigation, geography and the European exploration and settlement of the Pacific, in particular Australia.



http://www.sl.nsw.gov.au/discover_collections/history_nation/dixson/03_early_settlement_and_exploration/index.html

Maggie Patton

State Library of New South Wales

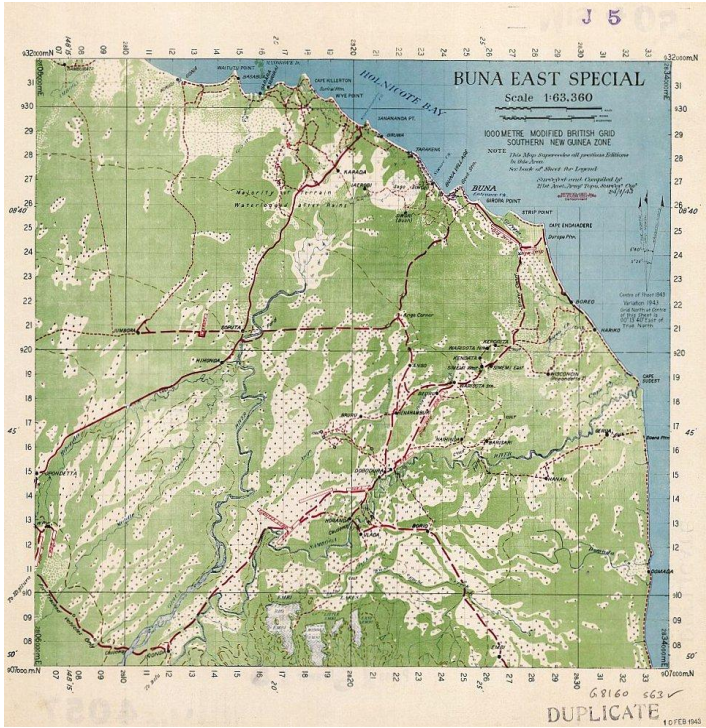
175th Anniversary of Major Mitchell's 1836 'Australia Felix' Exploring Expedition

A Major Mitchell Symposium and Exhibition was held on the weekend of 23, 24 and 25 September in Castlemaine, country Victoria, marking the 175th anniversary of Mitchell's exploring expedition of 1836 through what is now known as the State of Victoria. The symposium was organised by the delightful and very talented local artist Eliza Tree, who has recently traced Mitchell's route through the Riverina and Victoria, painting many landscapes, bush scenes, birds, flowers and insects that would have been encountered by Mitchell.

Eliza Tree spoke on the subject of Mitchell's remarkable lithographs. Guest speakers gave presentations on the indigenous cultural landscape (Associate Professor Ian D Clark), the geology of the region, settlement and pastoralism. Greg Eccleston gave a PowerPoint presentation on the surveying and mapping aspects of Mitchell's expedition, and a brief account of the murder of Assistant Surveyor Granville Stapylton.

Greg Eccleston

National Library of Australia Maps Collection – Digitisation report



The NLA Maps digitisation program for 2011/12 will see over 3,200 items scanned or photographed. This is the first year Maps has ventured into series map digitization, having completed digitisation of most of the Library’s pre-1900 collection in 2011.

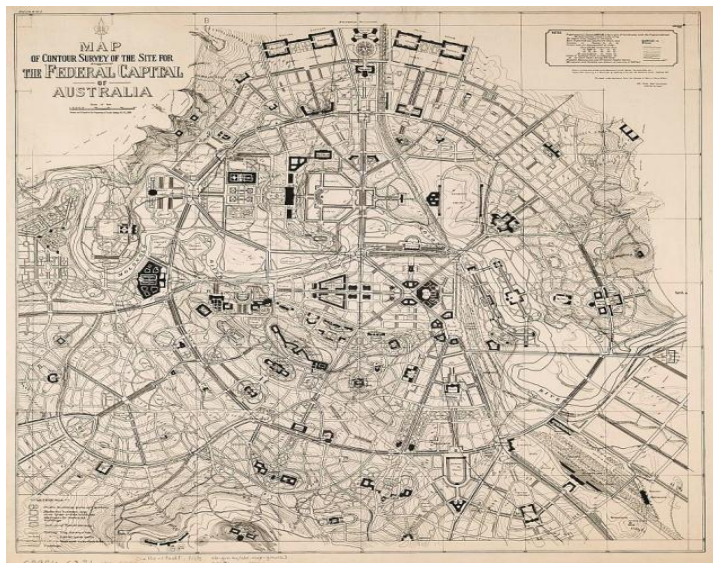
Work has begun on preparing various WWI and WWII mapping. First World War cartography scheduled to be available on the Catalogue (<http://catalogue.nla.gov.au/>) and Trove (<http://trove.nla.gov.au/>) by June 2012 includes France/Belgium trench maps, British and German field and...

‘Buna east special’, from Papua New Guinea 1 inch special series, compiled by 2/1st Aust. Army Topo. Survey Coy. Link to series images: <http://nla.gov.au/nla.map-vn5116695>

...topographic maps of European and Palestine theatres, and British War office series for Gallipoli. Digitisation of Second World War mapping will include various British, French, American series covering SW Pacific theatre. This includes a pre-war Malayan 1:63,360 series, several post-war series of Singapore, and coverage of New Caledonia and Fiji.

Control of maps and access by online index is a priority, and over 600 series indexes have been added to the Catalogue making identification online of our holdings and requesting much easier for key areas of the collection. The focus has been the various Asia-Pacific series, and all series coverage of SE Asia (except Indonesia and PNG, which are still in process) has now been catalogued, and a graphic index attached to the online record. Imperial-scale series mapping of Australia is also being sorted through for full cataloguing and indexing prior to digitization.

Maps has also commenced assessment and digitisation work on the Library’s unique, high use Federal Capital Design Competition entries, early Canberra planning series (ca 1914–15), and Canberra sales plans (1920s and 1930s). Digitisation of these frequently consulted maps and plans has begun and is scheduled to be online by June 2012.



Federal Capital Design Competition premiated designs. Competitor no. 81, Nils Gellerstedt : Map of contour survey of the site for the Federal Capital of Australia.

RMIT Students' Dinner 25/8/11 and 2010 Patricia Alonso Prize Winner (Jason Sankovic)

On behalf of the ANZMapS, Greg Eccleston attended the RMIT Geospatial Science annual student dinner. Greg reports: "It was, as usual, a very well-organised and successful occasion. There were about 20 tables each with places for 10 people; a big crowd!"

I had the privilege of presenting the 2010 Patricia Alonso Award to Jason Sankovic. He is a very charming young man and was extremely appreciative of being given this award. I was impressed by the fact that he already knew a lot about Patricia Alonso. I think he is a very suitable recipient of the award. I also met his delightful girlfriend!

I told Jason that the award included a year's subscription to ANZMapS, for which he thanked me profusely."

Greg Eccleston

News from the National Library of New Zealand

The National Library of New Zealand is gearing up for the move back into its Molesworth Street building in Wellington. Extensive renovations and improvements to both the exterior, particularly the roof, and the interior, are nearing completion. Staff are very excited about the return to upgraded facilities and expanded collection storage areas. Some collection items are already on the move to their permanent locations, and we plan to re-open in July 2012.

I have recently returned to the Alexander Turnbull Library as Curator, Cartographic after nearly twelve years spending time with my family (we have two children, Natasha and Jack), while remaining a 'sleeping' member of the (now) Australian and New Zealand Map Society. Previously I worked at the Library from 1996 to 1999, mainly involved with our rich and fascinating map collection. Having returned during the period when we are still in temporary locations, and with the Collection locked in secure storage, I am particularly excited about the move back and the opportunity of settling the maps into their new home!

In the meantime we've been working on many different projects including major retrospective cataloguing of New Zealand and Pacific material. We are also continuing with the collaboration project with the University of Auckland's School of Environment and General Library to digitise the Land Information New Zealand (LINZ) New Zealand Map Series (NZMS) maps. University of Auckland staff are scanning the LINZ originals and National Library's Content Services staff are creating separate 'electronic resource' catalogue records for each item. These records are linked to the paper map record and the electronic maps are uploaded to our National Digital Heritage Archive (NDHA). So far the NZMS 13s (cadastral, 1:63 360) and the NZMS 290s (land use overlays, 1:100 000) have all been successfully loaded. The NZMS 1s and 2s (topographical 1:50 000 and 1:25 000) are the next series currently being processed, with many other series to follow. The maps can be viewed on the National Library's catalogue from our homepage www.natlib.govt.nz, by searching for example "NZMS 13 online" as an exact phrase series search. These maps are still in Crown Copyright but copies can be ordered via our Timeframes website timeframes.natlib.govt.nz.



An interesting recent purchase for the Collection is a map drawn by Henry Chapman entitled ***Outline chart of the traverse of the ship Bangalore from England (as far as Sydney Australia) on her voyage to New Zealand, with the Governor Capt. Fitzroy RN, & H.S. Chapman, in 1843.*** (MapColl 100atc/[1843?]/Acc.53399). Henry Samuel Chapman was judge of the Supreme Court, Southern Division, sworn in the day after arrival by Governor Fitzroy after he himself was sworn in earlier in the day. The route of the vessel from England around the coastlines of France, Spain, West and South Africa, Brazil and southern Australia round to Sydney is shown, with travel distances, dates and relative locations along the voyage given. The ship continued on to Auckland but this part of the journey is unfortunately not shown. This manuscript is interesting in itself as a record of travel in its day, but it also adds value for researchers to other material also held by the Library, such as H.S. Chapman's correspondence and other papers. The map has been the victim of significant fading so is included here, but is much better viewed on the NDHA via our catalogue of unpublished material, www.tapuhi.natlib.govt.nz, where you can zoom in to see the detail.

The manuscript has been drawn on the verso of part of a copy of the *Plan of the Town of Wellington, Port Nicholson....* by William Mein Smith, published in London by Smith, Elder & Co., for the New Zealand Company in 1840 (the complete map in its case accompanies this manuscript, unfortunately in its disjointed state, and also includes an inscription detailing its provenance on the inside cover). Another (complete) copy of this map can be viewed on the National Library's catalogue.

Shay Turnbull

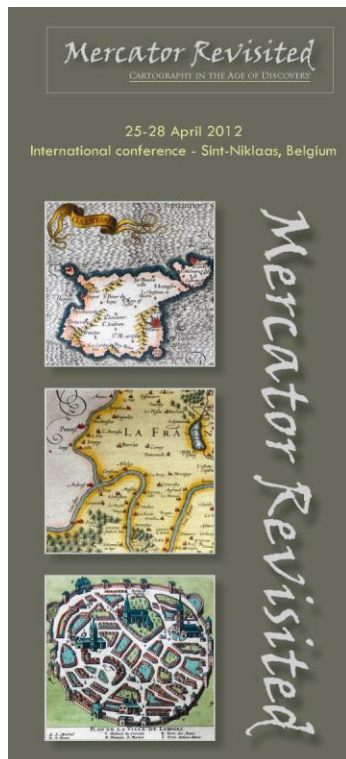
Curator Cartographic, Alexander Turnbull Library

Coming events, recent publications and other items of interest...

Mapping the 7 Billion People on the Planet

This four-tabbed app from Esri explores how we got to this number then via maps explores the distribution, growth rate and the life expectancy of the 7 billion inhabitants.

<http://mapstories.esri.com/7billion/>



"Mercator Revisited: Cartography in the Age of Discovery".

The conference, to be held in Sint-Niklaas (Belgium) from April 25-28 2012,

will focus on the place of cartography in general and Mercator in specific within the 16th century. It aims to provide a forum for new ideas and research findings from the fields of geography, historical cartography, history, art history or cultural heritage.

Key-notes will be delivered by Georg Gartner (ICA), Jerry Brotton (University of London), Mark Monmonier (Syracuse University) and Thomas, Horst (Munich University).

For more details please check the conference website:

www.mercatorconference2012.be

On behalf of the organisation, Bart Ooghe.

ooghe.bart@gmail.com

32nd International Geographical Congress in Cologne, 26-30 August 2012 'DOWN TO EARTH'

Session: New Cartographies of Risks and Conflicts.

Session organisers : Georg Glasze and Boris Michel (University of Erlangen-Nuremberg)

The emergence of web 2.0 considerably changes the production and use of maps. The “neo-cartographies” of the “geoweb” challenge not just the role of cartographers and geographers as the authorized producers of maps and cartographic knowledge, but produce a wide range of new mapping practices. This becomes most apparent in the context of web based crisis and risk cartographies where collaborative and highly dynamic mapping projects open up new ways of recording and managing crises and assessing risk. Recent examples include crisis mapping of the earthquakes in Haiti and Japan, mapping conflicts in North Africa and the Middle East, as well as the deployment of web mapping in risk assessment and environmental planning.

While these new practices are frequently celebrated as a new democratic and instant way of responding to social, political and ecological crises in very different contexts, there are a number of questions that call for a critical examination. This session invites papers related to the (online) mapping of conflicts and crises. We are looking for practical examples and reflective research, including critical cartography, that addresses some of the following questions :

- How are conflicts played out within crisis mappings. What new power relations are produced, what voices silenced?
- How are existing power relations and hegemonies contested, sustained or enhanced by these new cartographic practices?
- What is the role of technology in these processes and how can we conceptualize it?

- How do practices of defining and constructing risks, crises and conflicts change?
 - How is knowledge produced by these new discourses and practices and how does it differ from the previous power-knowledge of cartographic reason?
 - Despite the overwhelming positive response to most of these projects by media and academia there is very little work done on their actual impact. Does web mapping in these contexts make a difference ?
- In addition to registering your abstract for the conference on the IGC website <<http://www.igc2012.org>> IGC website please submit a copy to Boris Michel (bmichel@geographie.uni-erlangen.de) not later than 15 December 2011.
 ICG Cologne, 26-30 August 2012 'DOWN TO EARTH' <https://igc2012.org>

New books

**Burke and Wills
 The Scientific Legacy of the Victorian Exploring Expedition**

Edited by: EB Joyce & DA McCann, University of Melbourne.

Colour illustrations

368 pages, 245 x 170 mm

Publisher: CSIRO PUBLISHING

Hardback - November 2011

ISBN: 9780643103320 - AU \$ 59.95

<http://www.publish.csiro.au/pid/6733.htm>



“This book challenges the common assumption that little or nothing of scientific value was achieved during the Burke and Wills expedition.

The Royal Society of Victoria initiated the Victorian Exploring Expedition as a serious scientific exploration of hitherto unexplored regions of inland and northern Australia. Members of the expedition were issued with detailed instructions on scientific measurements and observations to be carried out, covering about a dozen areas of science. The tragic ending of the expedition meant that most of the results of the scientific investigations were not reported or published. Burke and Wills: The Scientific Legacy of the Victorian Exploring Expedition rectifies this historic omission.

It includes the original instructions as well as numerous paintings and drawings, documents the actual science undertaken as recorded in notebooks and diaries, and analyses the outcomes. It reveals for the first time the true extent and limits of the scientific achievements of both the Burke and Wills expedition and the various relief expeditions which followed.

Importantly, this new book has led to a re-appraisal of the shortcomings and the successes of the journey. It will be a compelling read for all those interested in the history of exploration, science and natural history, as well as Australian history and heritage. “

Brendan Whyte
 Editor of *the Globe*

Interactive guide to the draft Murray-Darling Basin plan:
<http://www.hawkesburygazette.com.au/specialfeature.aspx?id=5780>

Images from **NASA's Space Shuttle** are being used to create maps that could help manage river resources and flood events.

<http://www.australiangeographic.com.au/journal/space-tech-to-map-australias-water-.htm>

Robert Forsyth has recently been scanning largish Maps using an A3 scanner“... I sometimes have to make up to 9 overlapping images... and then stitch them together using **Microsoft ICE** (Image

Composite Editor) <http://research.microsoft.com/en-us/um/redmond/groups/ivm/ICE/>

I like this program as the images can be in any order, and even upside down!

I have concentrated on Queensland Dep't of Mines Maps that are no longer available but extremely useful to a few of my fellow Mining historians.”

For more information please contact Robert Forsyth.

Email lsabirds@bigpond.net.au

The Historical Atlas of Sydney contains digital versions of maps and associated documents.

Especially useful, the detailed City Section Survey Plans, commencing 1833

<http://www.photosau.com.au/CosMaps/scripts/home.asp>

Māori Maps website

www.maorimaps.com

A new website launched called Māori Maps, aims to provide a nationwide map of tribal marae across Aotearoa. The website assembles information about different marae, including background info (ie affiliated whānau, hapū and iwi), photographs, directions, contact details etc. To date, the site contains information for marae in Te Tai Tokerau (Northland) and Tāmaki Makau Rau (Auckland) regions. The website indicates that work involving the addition of remaining marae from around the country will continue over the next two years.

NB: This site does not include marae that are non-tribal, belong to Urban Māori Authorities, adhere to educational and other institutions, or otherwise do not have a specific link to iwi, hapū or whānau. The Māori Maps project is managed by Te Potiki National Trust Limited.”

The Maori Land Court in the NZ Ministry of Justice has launched an online **google maps-based tool for finding Maori land**.

You can search by individual owner name, trust name, block name or via the map (Maori land cadaster taken from LINZ is greyed in).

<http://www.maorilandonline.govt.nz/gis/owner/interestSearch.htm>

Australian and New Zealand nautical charts:

Maps showing areas of Australian and NZ charting responsibility.

Australia is responsible for charting PNG and the AAT

NZ is responsible for charting Tokelau, Tonga, Niue, Samoa and the Cook Islands and the Ross Dependency.

<http://www.linz.govt.nz/hydro/charts/nz202-chart-catalogue/map-image/index.aspx>

Current NZ charts can be downloaded for free in jpg and tif format at

<http://www.linz.govt.nz/hydro/charts/nz202-chart-catalogue>

'Choose a chart' to see a large thumbnail of the chart and be given download options.

'Choose a region' to see the chart index for that region. From the indexes, click on the chart numbers to see a large thumbnail of the chart and be given download options.

The Australian and New Zealand Map Society *Newsletter*. ISSN 1837-3372.

An occasional series of newsletters produced to keep members of the Australian and New Zealand Map Society informed about matters of immediate interest and to supplement *The Globe*, journal of the ANZMapS. Edited by Karen Crow.

Material for the *Newsletter* can be forwarded to: Karen Crow, Hocken Collections, University of Otago, P. O. Box 56, Dunedin 9054, NEW ZEALAND. (Email: karen.craw@otago.ac.nz)

Please send reviews, articles and other items of general interest for inclusion in *The Globe* to: Dr. Brendan Whyte, Map Section, National Library of Australia, Parkes Place, Parkes, ACT 2600, AUSTRALIA. (Email: obiwonfive@hotmail.com)

GST: The Australian and New Zealand Map Society's ABN is **19 046 516 617**. As a not-for-profit incorporated association (registered in Victoria - no. A0034021A) with an annual turnover of less than \$100 000, ANZMaps is not registered for and does not charge GST. Consequently, ANZMapS does not issue 'tax invoices', as these may only be issued by organizations that are registered for GST

Newsletter of the Australian & New Zealand Map Society (ANZMapS), published by
The Australian & New Zealand Map Society, Incorporated (Melbourne, Victoria). Issue # 111, November 2011



Australian and New Zealand Map Society Inc.

Application for 2012 Membership

Dear ANZMapS Members,

Membership fees for 2012 are due by 31 March 2012. The annual membership fee for 2012 is \$50.00 for ordinary members (individuals and institutions) and \$30.00 for concessional members (students).

Amy Griffin, ANZMapS Business Manager

Please enroll me as a member of ANZMapS.

- Individual (AUD \$50.00)
- Institutional (AUD \$50.00)
- Student (AUD \$30.00)

If you require a receipt, tick here

Name: _____
Address: _____
_____ Postcode: _____
Email: _____
I enclose \$ _____
Invoice my organization:

Address: _____
_____ Postcode: _____

Payment Options:

1. Cheques: Cheques for fees made payable to 'Australian and New Zealand Map Society' should be forwarded to the address below, with this form. Cheques should be drawn in Australian dollars on an Australian bank.
2. Direct Debit: BSB 083-170, Account Name 'Australian and New Zealand Map Society', Account Number 64-233-6227, Reference 'MEMBER NAME, 2012 Dues'
3. Payment by Credit Card:

Card type (circle): Bankcard / MasterCard / Visa
Card Number: _____ Expires: /
Cardholder Name: _____
Cardholder Signature: _____
Amount Authorised: \$ _____

Name of Member nominating (if applicable) _____

(Please ensure this information is communicated to the Business manager, a.griffin@adfa.edu.au)

Post to: ANZMapS, c/- Amy Griffin, School of Physical, Environmental and Mathematical Sciences
UNSW @ ADFA, Canberra, ACT 2600, AUSTRALIA.

GST Information: The Australian and New Zealand Map Society's ABN is **19 046 516 617**. As a not-for-profit association with an annual turnover of less than \$100 000, ANZMapS is not required to register for, or charge, GST and does not do so. Under GST law the ANZMapS cannot issue tax invoices.

The Australian and New Zealand Map Society Inc. Incorporated Association (Victoria) no. A0034021A. ABN: 19 046 516 617
web: <http://anzmaps.org>